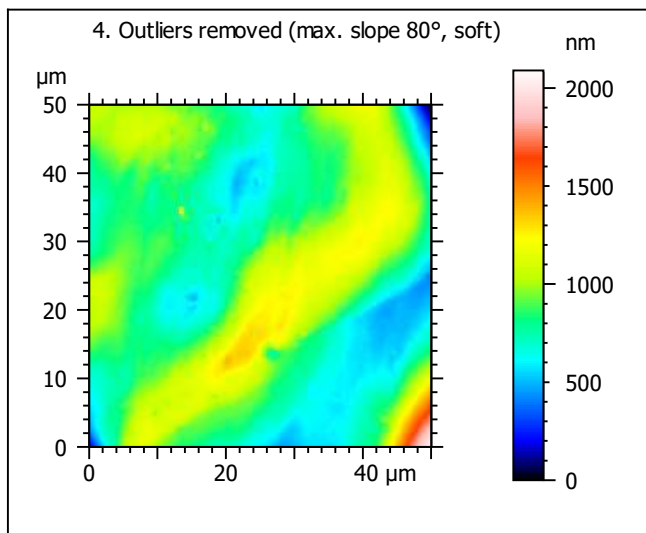
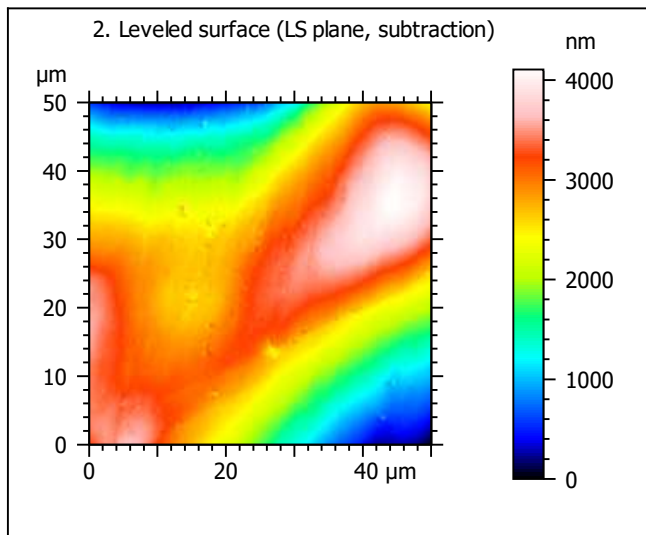
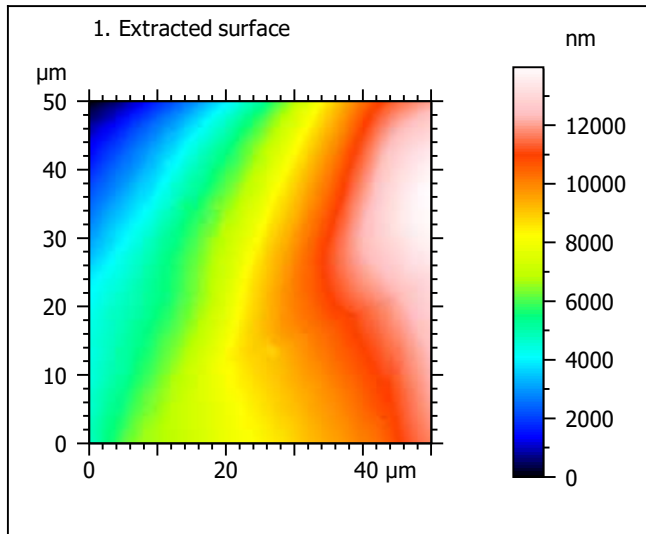
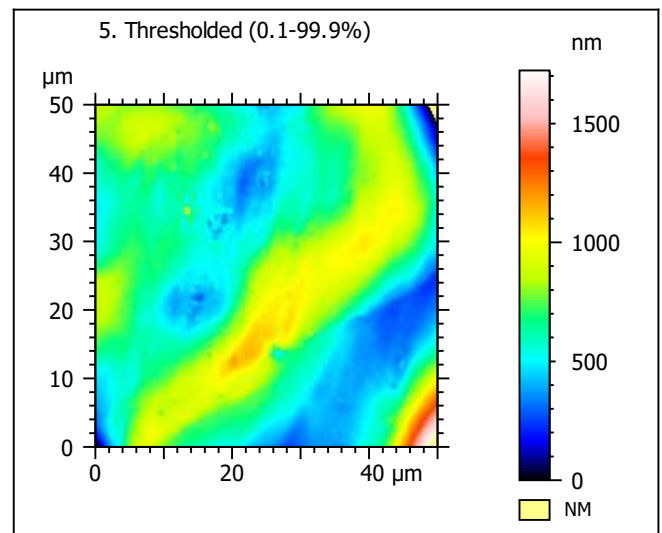
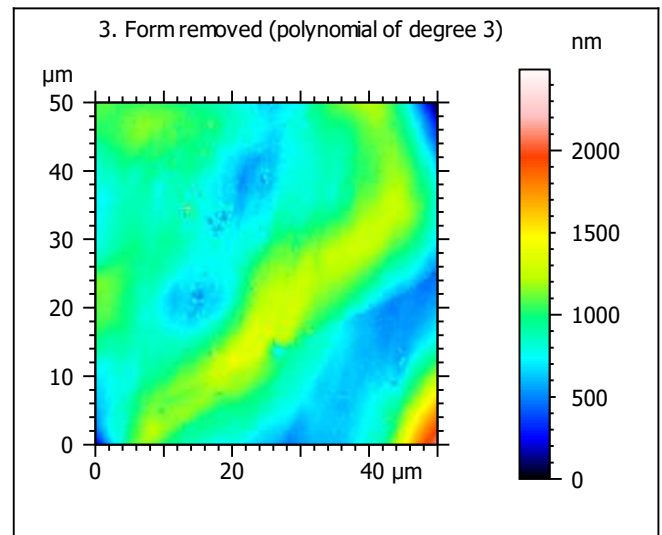


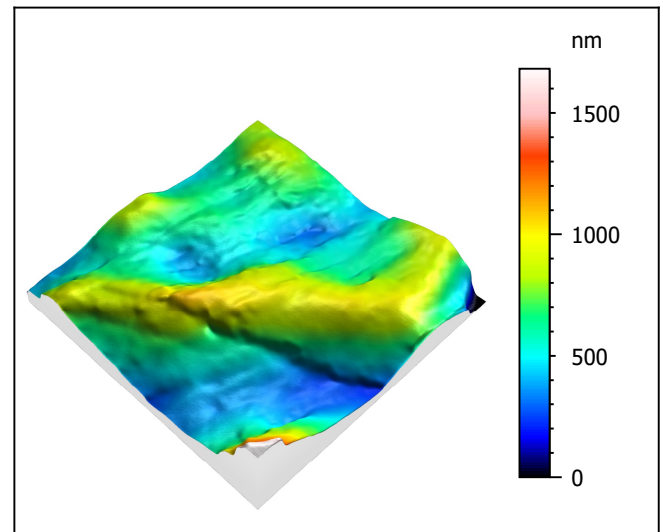
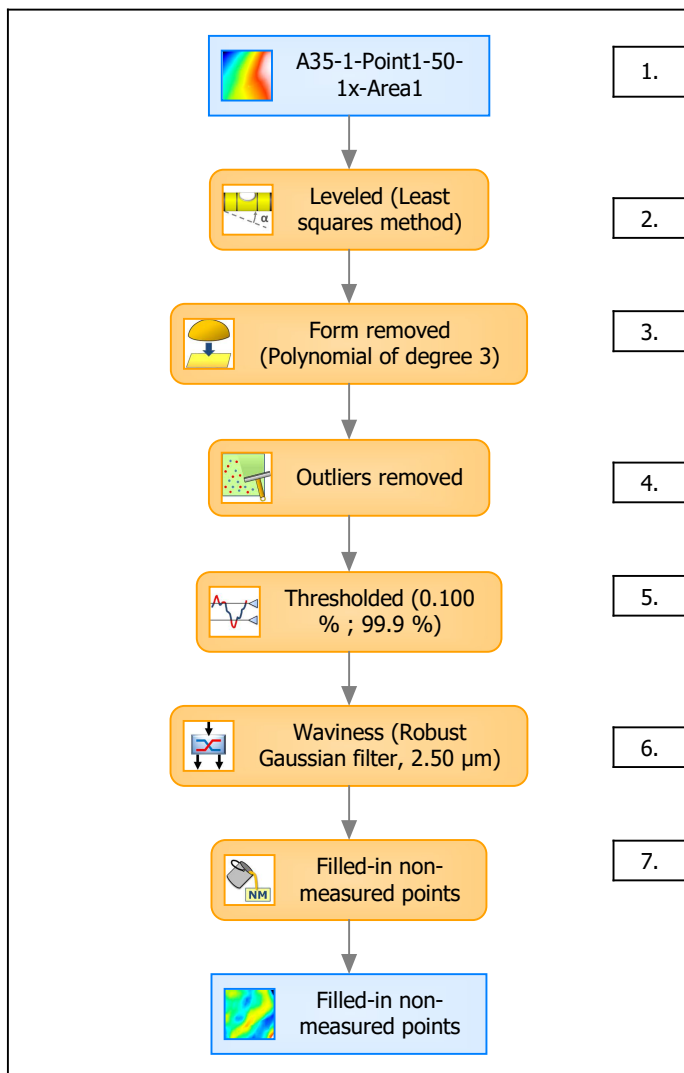
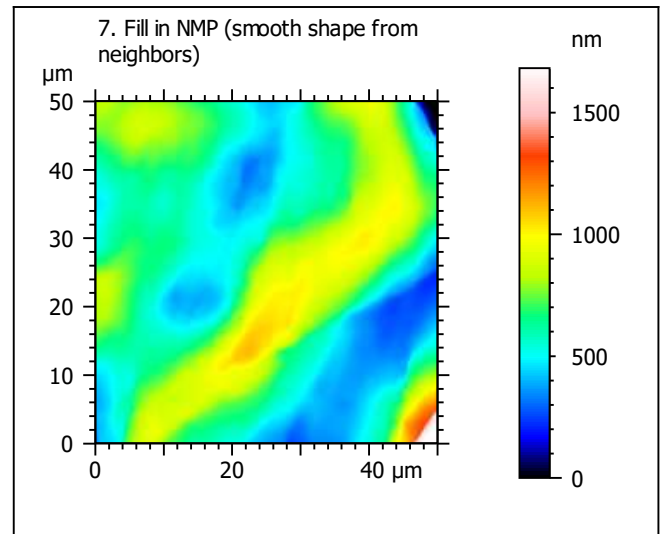
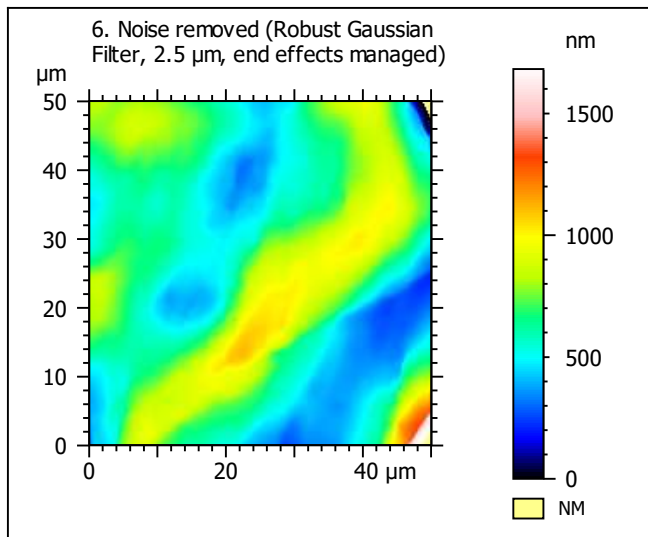
Template to process all extracted 50x50 μm surfaces, acquired with the LEXT 4000 with the 50x/0.95 objective at 1x zoom

A. Processing



Identity card			
Name:	A35-1-Point1-50-1x-Area1		
File path:	D:\Data\Anto\A...\A35-1-Point1-50-1x-Area1.sur		
Axis:	X		
Length:	50.0	μm	
Size:	201	points	
Spacing:	0.250	μm	
Axis:	Y		
Length:	50.0	μm	
Size:	201	points	
Spacing:	0.250	μm	
Axis:	Z		
Length:	13979	nm	
Size:	11219	digits	
Spacing:	1.25	nm	
NMP ratio:	0.00 % (0 Pts)		





Identity card			
Name:	A35-1-Point1-50-1x-Area1 > Levelled (Least s...		
Axis:	X		
Length:	50.0	μm	
Size:	201	points	
Spacing:	0.250	μm	
Axis:	Y		
Length:	50.0	μm	
Size:	201	points	
Spacing:	0.250	μm	
Axis:	Z		
Length:	1682	nm	
Size:	1350	digits	
Spacing:	1.25	nm	
NMP ratio:	0.00 % (0 Pts)		

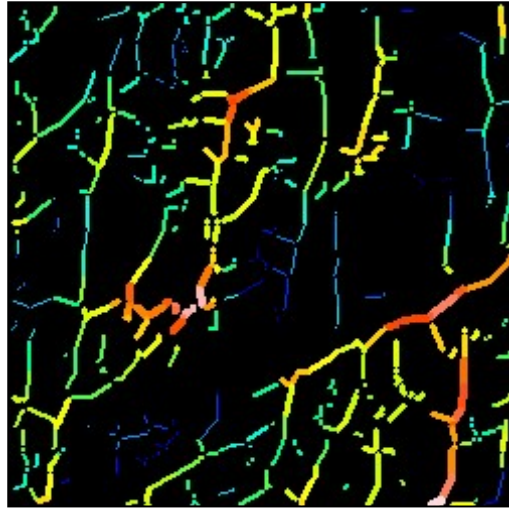
Analyses:
8. ISO 25178
9. Furrow
10. Texture isotropy and direction
11. SSFA

B. Analyses

8. ISO 25178-2 parameters on surface #7

ISO 25178		
Height Parameters		
Sq	210	nm
Ssk	0.506	
Sku	4.13	
Sp	1030	nm
Sv	652	nm
Sz	1682	nm
Sa	169	nm
Functional Parameters		
Smr	41.3	%
Smc	278	nm
Sxp	332	nm
Spatial Parameters		
Sal	5.39	μm
Str	0.154	
Std	78.7	°
Hybrid Parameters		
Sdq	0.066	
Sdr	0.212	%
Functional Parameters (Volume)		
Vm	0.00984	μm ³ /μm ²
Vv	0.288	μm ³ /μm ²
Vmp	0.00984	μm ³ /μm ²
Vmc	0.194	μm ³ /μm ²
Vvc	0.271	μm ³ /μm ²
Vvv	0.0175	μm ³ /μm ²

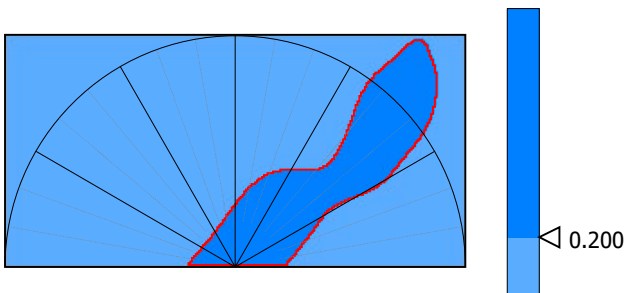
9. Furrow analysis surface #7



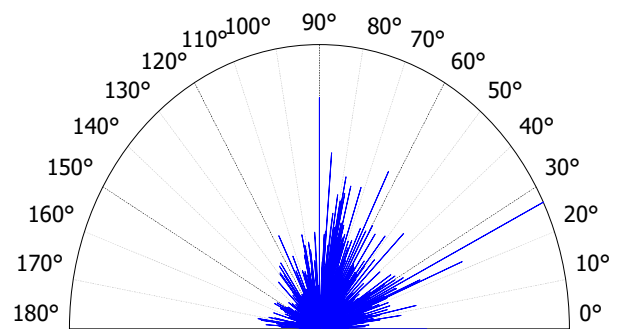
All furrows are shown.

Parameters	Value	Unit
Maximum depth of furrows	245	nm
Mean depth of furrows	106	nm
Mean density of furrows	2199	cm/cm2

10. Texture isotropy and direction on surface #7

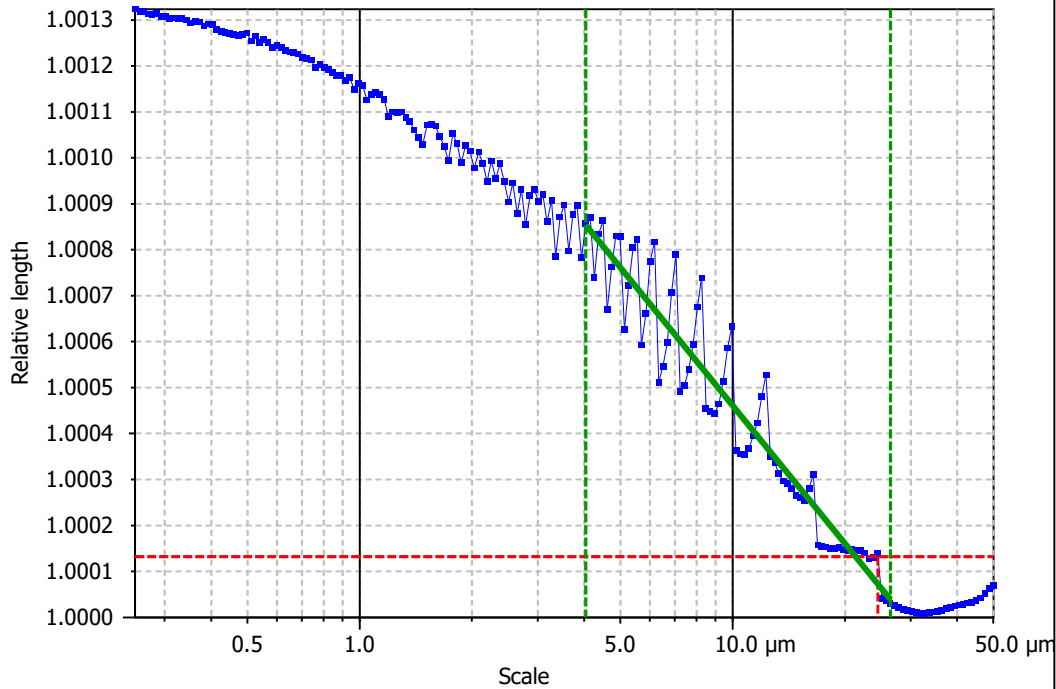


Parameters	Value	Unit
Isotropy	13.0	%
Periodicity	*****	%
Period	*****	μm
Direction of period	*****	°



Parameters	Value	Unit
Isotropy	15.4	%
First Direction	26.5	°
Second Direction	90.0	°
Third Direction	63.5	°

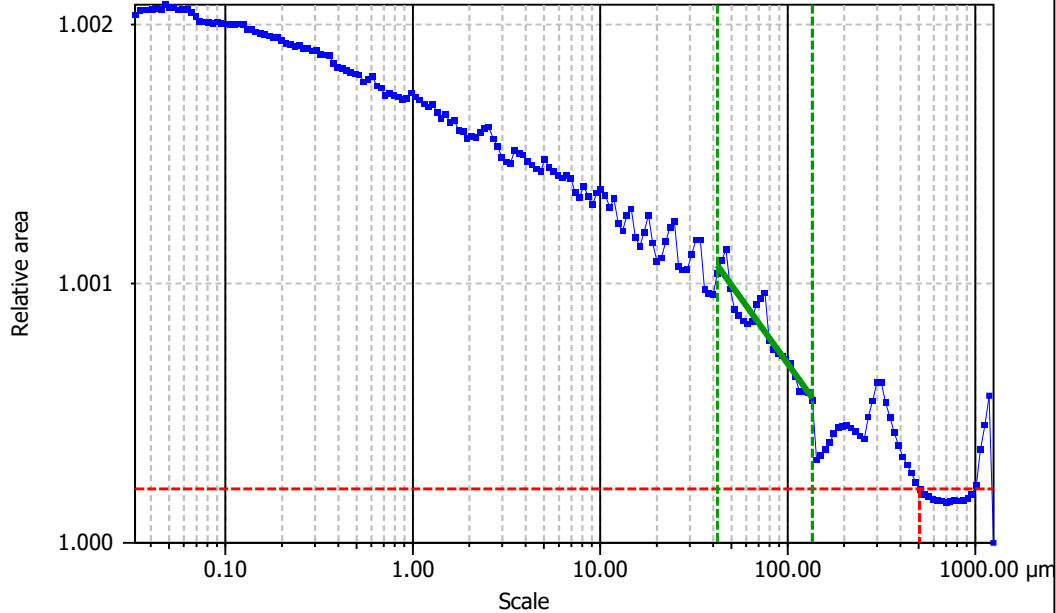
11. SSFA on surface #7



Information

Method Length-scale (rows)

Parameters	Value	Unit	Comment
epLsar	0.0168		(1.8 μm , 5°)



Information

Method Area-scale (four corners)

Parameters	Value	Unit	Comment
Asfc	0.440		
Smfc	71.5	μm^2	
HAsfc9	2.26		(3x3)
HAsfc81	NaN		(9x9)